



Swancare

Ref: Richard Cleaver Lodge, Bentley

Water Main Scanning Report

*Routine Services, Installation and Testing of Fire Protection Systems and Equipment
in accordance with the Australian Standards*

General Overview

DATE: 13/06/2024

Building Name: Swancare (Richard Cleaver Lodge)

Building Address: 34 Graham Crescent, Bentley

RE: Towns Main Location Report

Thank you for the opportunity to provide the attached information following our previous site visits in relation to the proposed Towns Main works to locate and identify any possible impairments affecting the performance of the Street Hydrant located on the corner of Graham Crescent.

BanhamsWA is wholly Western Australian owned and operated specialist Fire, Plumbing and Electrical services consultancy, Installation, Maintenance and Testing Company specialising in all Commercial type Buildings.

Our multi-disciplined experience and interior services expertise empowers us to design projects tailored to meet our clients' needs whilst complementing the existing building services framework.

Our Trusted Brand within the Industry provides piece of mind to our clients with a complete can-do solution based attitude.

We submit a fixed fee for the engineering services on all services being awarded and in conjunction with our Terms & Conditions. engineering services on all services being awarded and in conjunction with our Terms & Conditions.

Regards,
Robert Peters

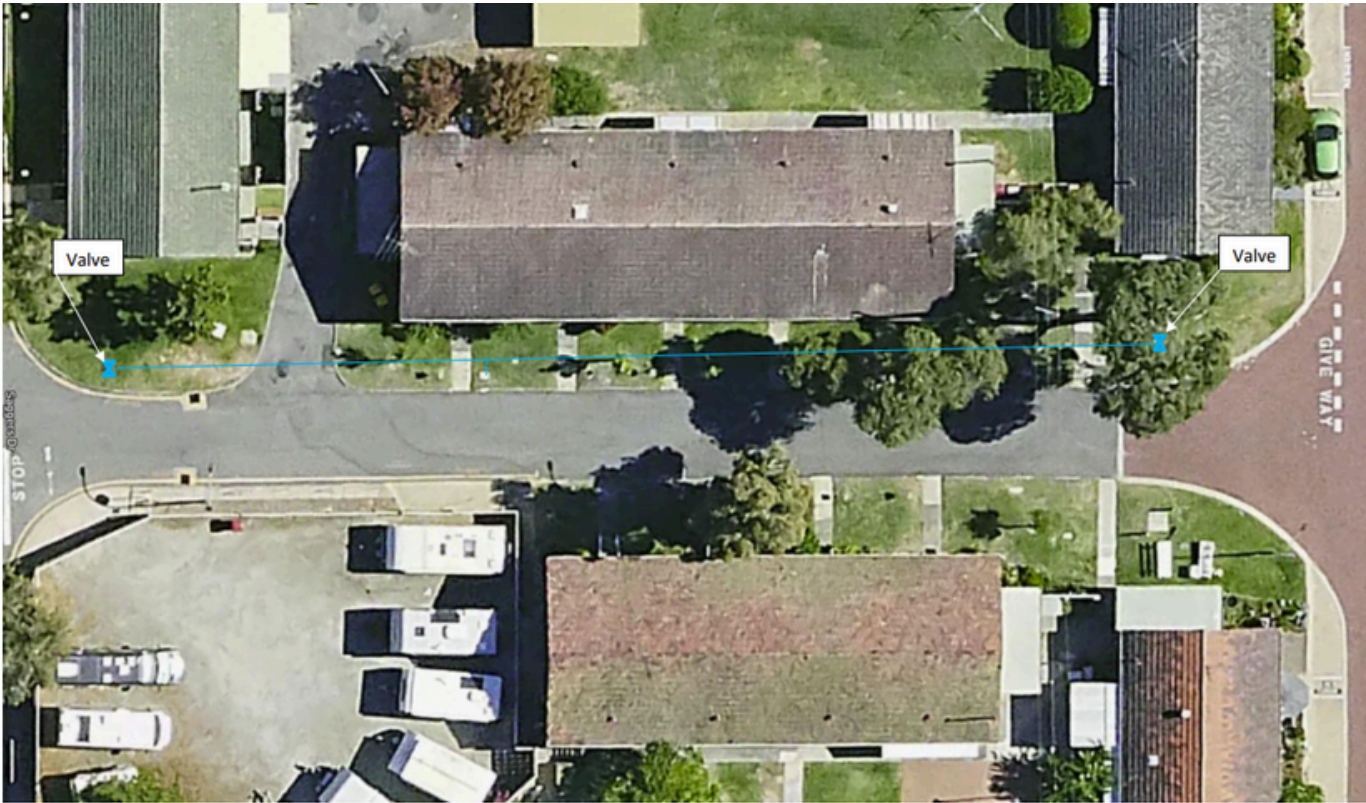
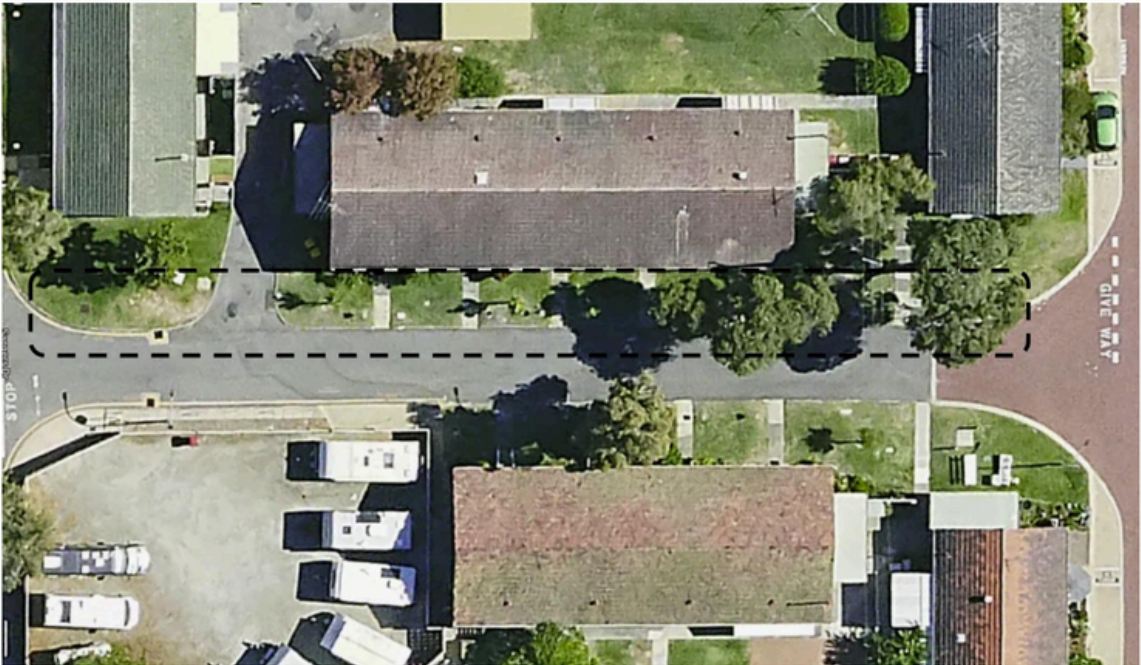
Director
08 9206 0017 - 0448400170
rob@banhamswa.com.au

General Overview and Test Results

AS5488 Utility service line colour legend

Communications	
Drainage	
Electrical	
Fire Service	
Gas	
Petroleum, Oil	
Recycled Water	
Sewer	
Unidentified Service	
Water	
Work scope	

Note: Some site conditions or requirements may require alternate colour identification. This reports findings at time of capture. All location marking to be confirmed by potholing.



General Overview and Test Results



Who We Are

Committed to delivering quality workmanship and exceeding client expectations, we believe in our principle values and proudly deliver on them whilst ensuring that compliance to all regulatory authorities and standards are never compromised across all of our divisions.

The BanhamsWA expert team operates across Western Australia, offering a unique business model in plumbing, gas, fire and electrical services. Specialising in all aspects of Commercial and Domestic services, we aid in the compliance and maintenance of fire safety in a prompt and cost-effective way.

Educating our clients on the most up to date government and industry regulations through regular maintenance reporting and ongoing transparency, BanhamsWA provide peace of mind to customers.

Our Services

- Fire Services
- Plumbing and Gas Services
- Electrical Services
- Passive Fire Services
- 24 - Hour Call Out Service



B/STRATA

 oakfield
EXPERTS IN STRATA



Digital Reporting

Our electronic reporting system (Firemate) provides clients with clear and defined reporting processes that enables Banhams WA to provide detailed reporting solutions for our clients. The comprehensive reporting increases efficiency and effectiveness of assets by enhancing the compliance and standards in which these assets are maintained.

Digital reports provided by Banhams through this system enables clients to receive their routine maintenance reports faster and in a much more accessible way than ever before. By having access to our client portal, you will be able to have full transparency on your site in real time.



SCHEDULE




SERVICE



REPORT



MAINTAIN



**To discuss future requirements, or to book an appointment
with one of our team, please contact us today and find out
more about our range of Fire Protection, Plumbing and
Electrical services.**

Western Australia

Robert Peters
Director
P: 08 9206 0017
E: rob@banhamswa.com.au

Mail to:

Suite CO1, 62 Constellation Drive
Ocean Reef
6027

BANHAMS WA
Plumbing Gas Fire & Electrical Services

www.banhamswa.com.au